

Nitrogen pollution, health, and the Blue Economy

Maya Trotz, PhD

Professor, Civil and Environmental Engineering
University of South Florida

University of Miami Climate & Health Symposium
5/6/2022





Dead fish and eels killed by a red tide in the Tampa Bay area collect in St. Petersburg, Florida, 2021. *Eric Higgs/Tampa Bay Estuary Program*

ALGAE BLOOM AFFECTS RECREATION/EXERCISE



Is Agrochemical Contamination Killing Nebraska's Children? The harrowing trail of toxic nutrients in farm country water.



<https://www.circleofblue.org/2022/world/is-agrochemical-contamination-killing-nebraskas-children/>



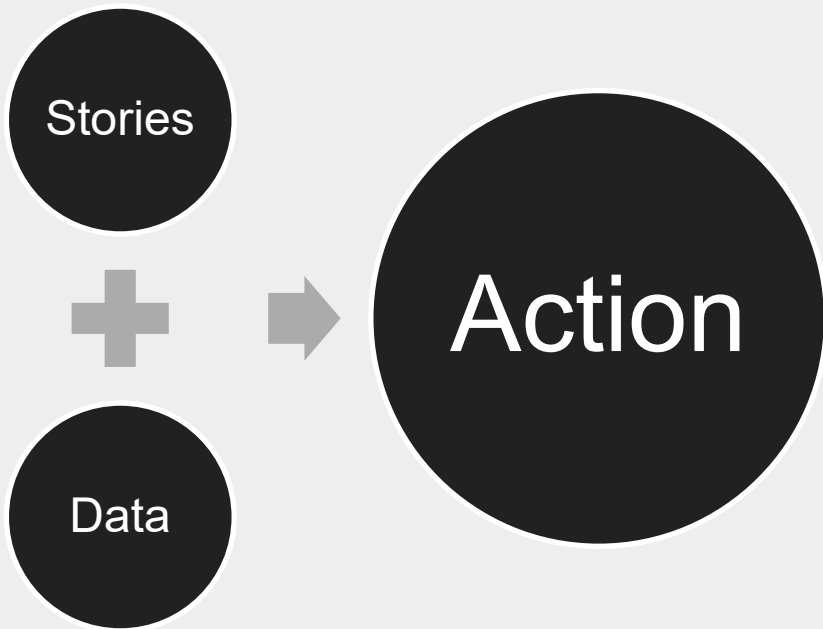


Blue-Green Action Platform

...bridging communities
upstream and downstream to
improve nitrogen management



IOWA



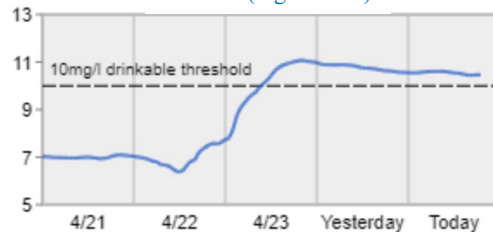
Your Watershed

Unsafe to
Drink



Your Nearest Sensor Location: Cedar Rapids, IA
Current Nitrate Level: 10.5 mg/L

Nitrate (mg/L as N)



ANNUAL

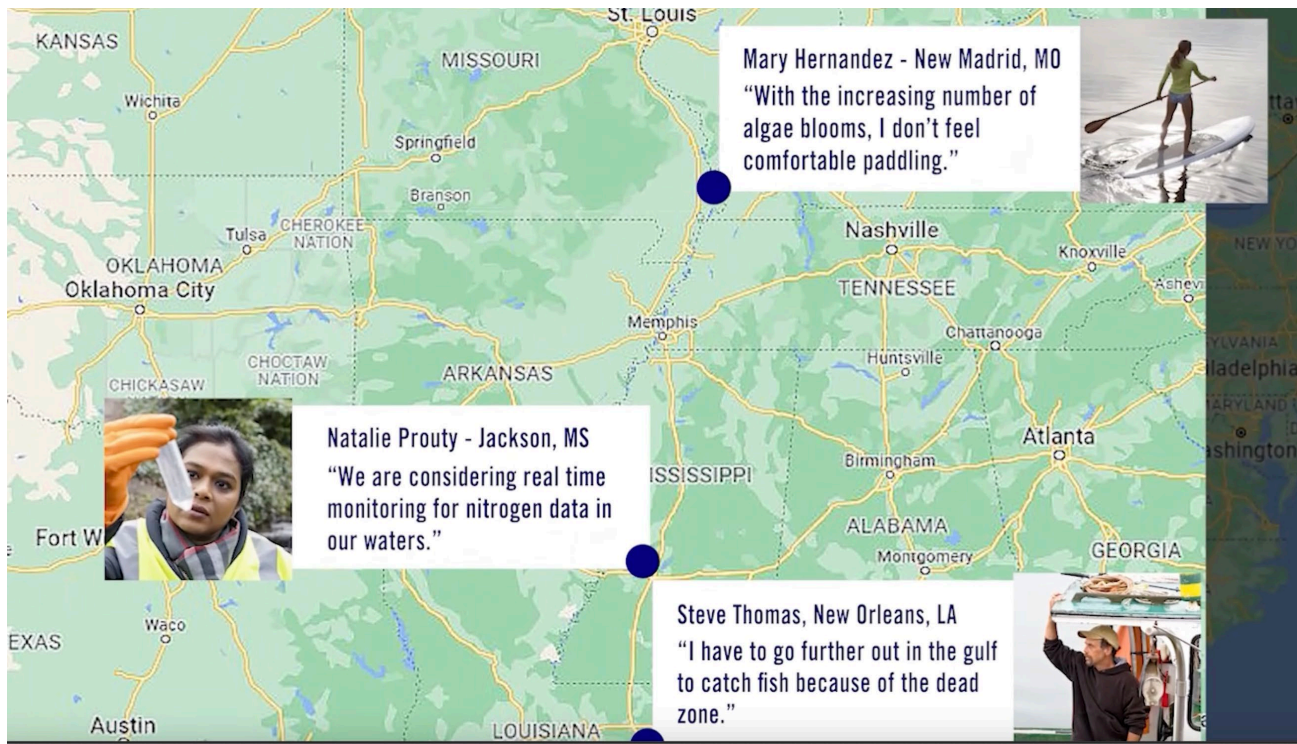
MORE DATA





Jim John - Cedar Rapids, Iowa
 "I use conservation practices on my farm. It is better for water quality."

Henrietta Kim - Burlington, Iowa
 "Our water rates are increasing because we have to treat it for nitrates."



Mary Hernandez - New Madrid, MO
 "With the increasing number of algae blooms, I don't feel comfortable paddling."



Natalie Prouty - Jackson, MS
 "We are considering real time monitoring for nitrogen data in our waters."



Steve Thomas, New Orleans, LA
 "I have to go further out in the gulf to catch fish because of the dead zone."





I spend more on treating my drinking water
Nobody swims in the rivers here
Agricultural runoff
We need more conservation practices
The Farm Bill needs to be streamlined so conservation practices are easier
Save on fertilizer

Iowa



Fish kills smell
Harmful Algal Blooms make me sick
Tourists avoid my business
Manatee deaths increase
Residential fertilizer
Stormwater runoff
Car emissions
Wastewater discharge

Florida



Improved wastewater treatment
Marine life suffers
Need to collect data
Important to educate youth

Virgin Islands



MAYA BURKE
TAMPA BAY ESTUARY PROGRAM



“We need to humanize nitrogen management.”

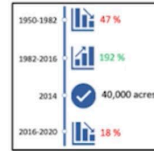


Community Summary

Tampa, FL

Tampa Bay was designated an “estuary of national significance” by Congress in 1990, laying the foundation for the creation of the Tampa Bay Estuary Program (TBEP) in 1991. Partnerships exist to restore and protect Tampa Bay through implementation of a scientifically sound, community-based management plan.

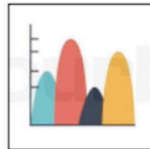
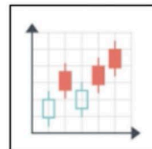
Historical Trends & Practices



35,000 acres of seagrass restored.

Learn more about water quality, scallops, benthic data.

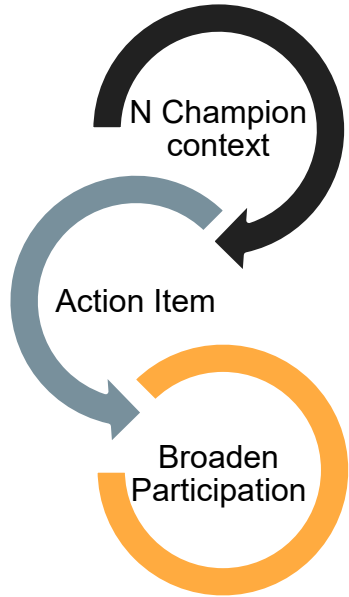
Future Projections & Action Guideline



Grants to address nutrient management on residential and community gardens.



Alliance Institute



Iowa – Seth Watkins Iowa Farmer	Tampa – Walter Smith Environmental Justice Leader	USVI – Kelcie Troutman Environmental Educator
Connect people to farm bill & policy needed for crop diversity & soil health	Connect local library to FAMU + nutrition & urban gardening	Create educational material linked to outdoors
Snowbirds, veterans (Force Blue), orgs working on sustainable Ag	Land Grant univ, established orgs like NAACP	Informal learning environments, BIMS bites

Accelerating Nutrient Pollution Reductions in the Nation's Waters

Environmental Protection Agency (EPA) will work to ensure that rural, environmental justice, low income, and tribal communities benefit from efforts to address sources of nutrient pollution.

- Bipartisan Infrastructure Law will deliver \$132 million to support the National Estuary Program and more than \$1.7 billion for Geographic Programs.
- \$60 million in new resources to implement the Gulf Hypoxia Action Plan.

End Users

Nitrogen champions, community organizations, boundary spanning organizations, estuary programs, hypoxia task forces

Stakeholders

Cities, utilities, developers, industry, academia, educators, everyone



Thank You!
Maya Trotz, matrotz@usf.edu

510 593 3647

This work has been supported by grants from the National Science Foundation Numbers 1735320 and 2137891. Any opinions, findings, and conclusions or recommendations expressed in this material are those of the author(s) and do not necessarily reflect the views of the funders.